

#1

COMICS MAGAZINE

Social Mind Thief

SUPERHEROES ACTIVATE
SOCIAL MIND

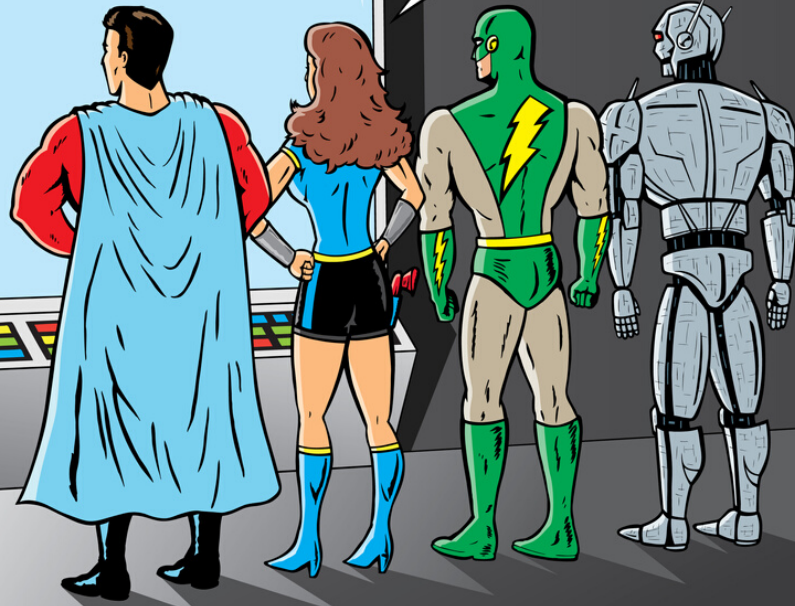
2.49



**Dear Super Heroes,
Our world is in serious danger and we
need your help. Your mission is
to rescue social mind that the social thief
is deactivating worldwide.
You must reactivate people's
Social Mind now!**

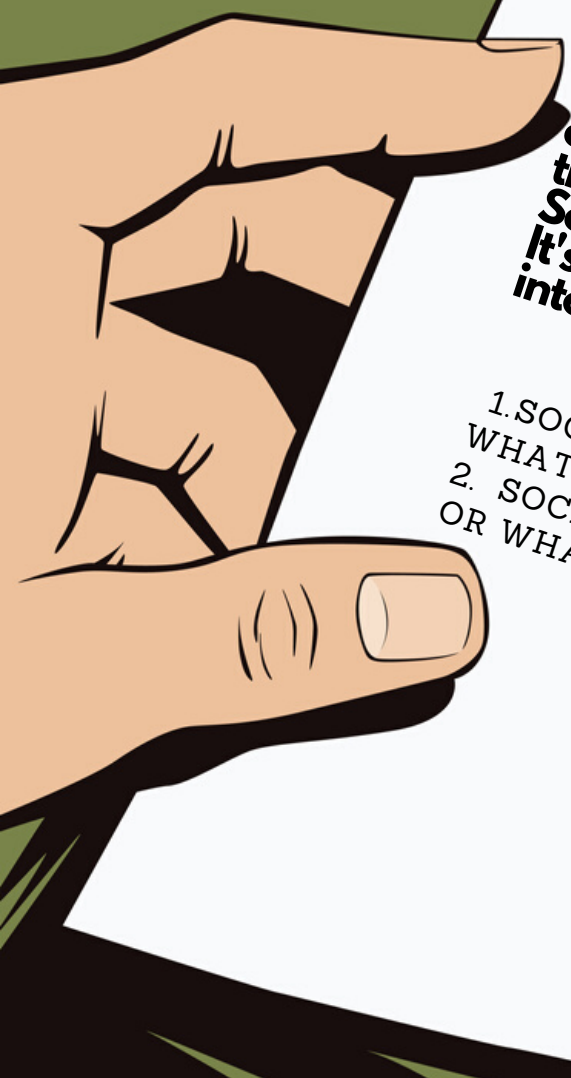
WITHOUT SOCIAL MIND PEOPLE CAN'T
STAY CONNECTED!

Social Mind
TO IS MY SUPER
POWER




As you know, humans are
social beings. Their world is a
social network. Social means
connected with each other. They stay
social and connected to each other
because it makes them feel safe and
happy. They want to be supported,
they need someone to share their
feelings with and they support
others the same way in return.





Humans use their social mind to connect with each other. Social mind helps know what others are thinking about and what they are interested in. Social mind helps to be awesome at talking to others. It's like a super power that keeps people involved and interested in the conversation.

- 
1. SOCIAL MIND HELPS READ FACES TO KNOW WHAT PEOPLE ARE THINKING ABOUT
 2. SOCIAL MIND HELPS KNOW WHEN PEOPLE NEED SUPPORT OR WHAT THEY WANT TO TALK ABOUT



What will happen if everyone can't use their Social Mind anymore?



I deactivated and stole their social mind devices

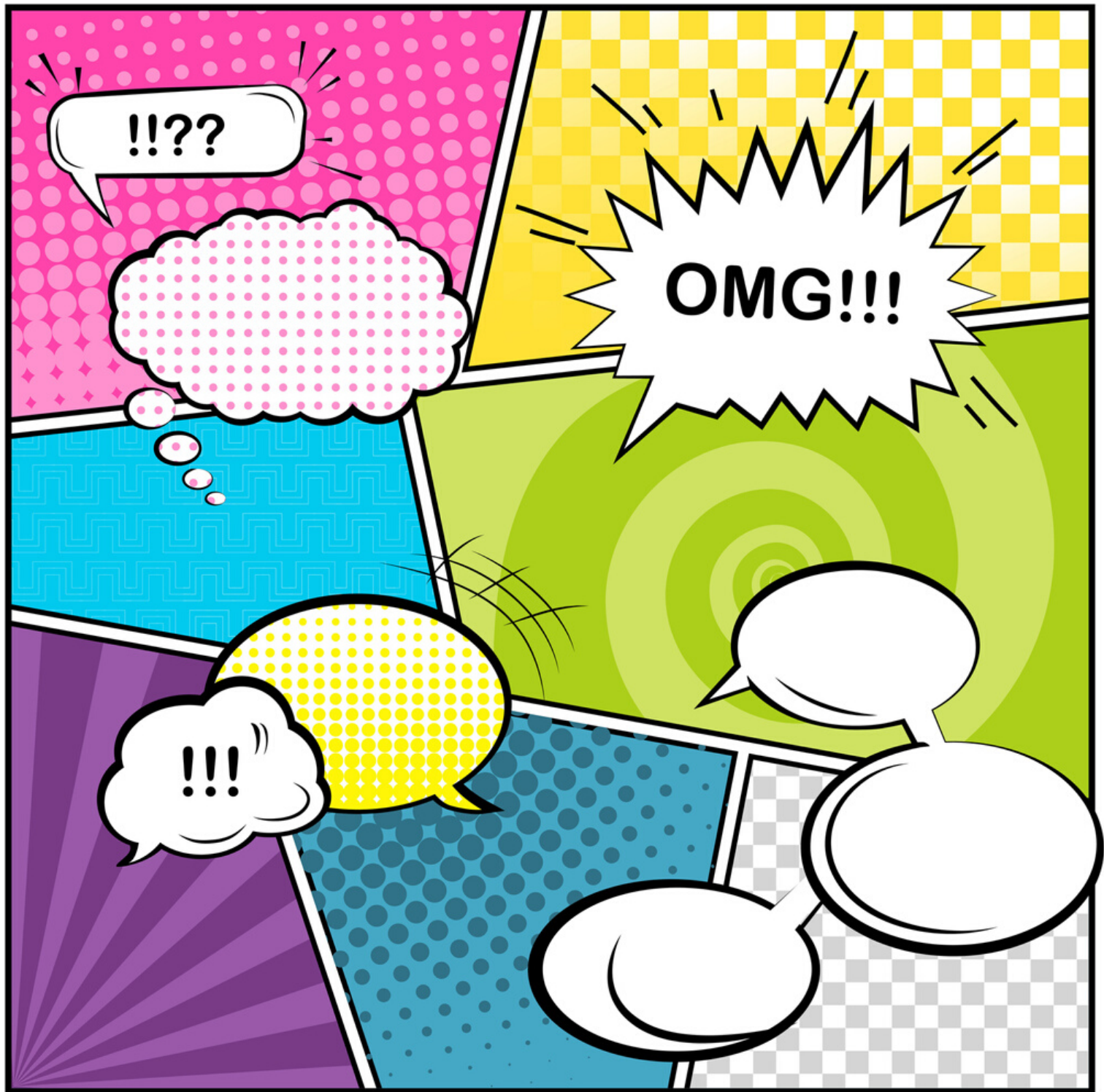


Circle those who look socially connected, and explain how you know it:



Superheroes to the rescue! Let's get the thief...

Finish this comic page, add characters (superheroes and the Social Mind thief) and add words to the characters' thought bubbles. How did the superheroes get the thief?





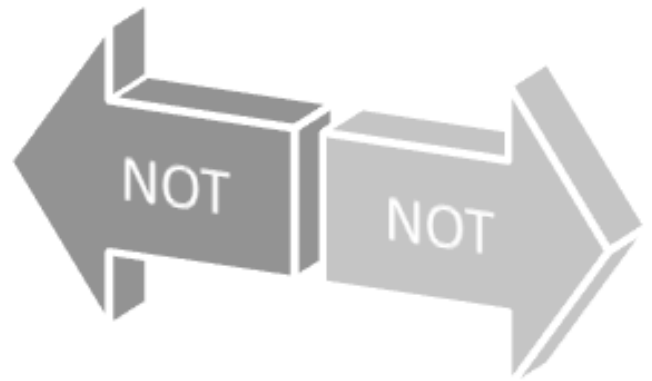
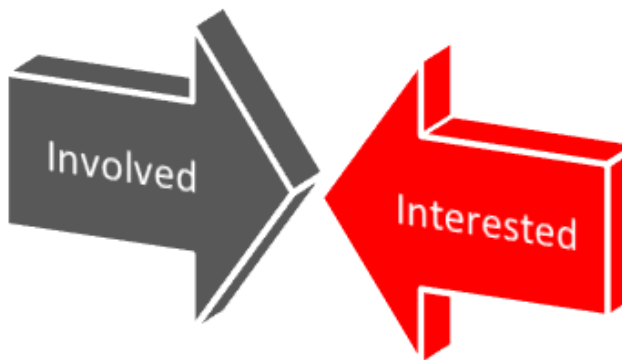
**Now let's re-activate social minds worldwide!
People can use their vision device to read faces!**



Circle all faces that look involved and interested in the conversation

HOW DO YOU KNOW WHO IS INTERESTED AND INVOLVED, AND WHO IS NOT?





Reading faces helps know what people are thinking about and how they are feeling...

IT'S LIKE READING A BOOK WITH STORIES. READING FACES HELPS READ PEOPLE'S STORIES AND FEELINGS...



Let's practice reading faces...

Write what you think these people are feeling...



Which parts of their face tell you how they are feeling? Mouth? Eyes? Eye brows? Nose?...

Now, add facial features with emotions to these faces...sad, excited, angry, loving, crying, etc



Now, it's time to draw your own comic book about Social Mind... (next page)

